

01-14-2021 – 01-27-2021 | LEIPZIG

ANDREAS GRAHL
THE CLUB

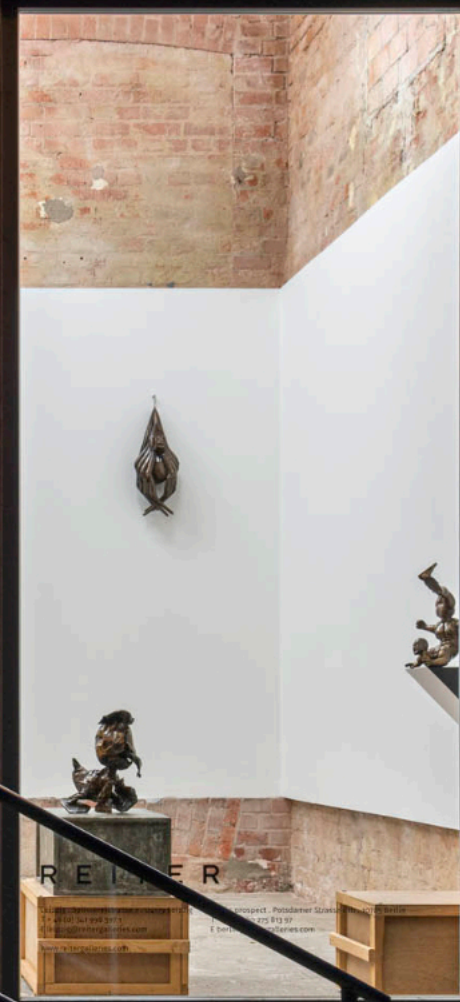
REITER

LEIPZIG
SPINNEREISTRASSE 7 / HALLE 6 . D-04179 LEIPZIG
+49 (0) 341 998 59 71 . LEIPZIG@REITERGALLERIES.COM

BERLIN
POTSDAMER STRASSE 81B . D-10785 BERLIN
+49 (0) 30 275 813 97 . BERLIN@REITERGALLERIES.COM

WWW.REITERGALLERIES.COM

6
B



ANDREAS GRAHL

born 1964 in Berlin
lives and works in Leipzig

The sculptures by Andreas Grahl can be viewed as both: the great fascination of the bronze figure as testimony of past cultures with their unexplained, mysterious and dignified aura – and the interplay between the present possibilities that material and production methods can offer the artist today. The small sculptures of the Renaissance and the way they were created under technical difficulties, along with their progressive ideas and sculptural production are the reasons behind the works of Andreas Grahl; but not their role models.

Objective starting points are among the u.a Ready-mades mundane nature. First of all, children's connectable toy figurines are based on the simple principle that prefabricated parts can produce lasting connections and can form a defined whole. The fact that variations of these connections can lead to alternative possibilities and different versions of the original figure is the core of Grahl's approach. Through the use of one of the oldest materials – Bronze, which not only provides a great freedom in shaping and moulding but also in the assertion of the value and manifestation of bronze figures of the world – is also present in Grahl's contemporary works.





Rochen, 2020, cast aluminum, lacquered, 118 x 106 x 36 cm

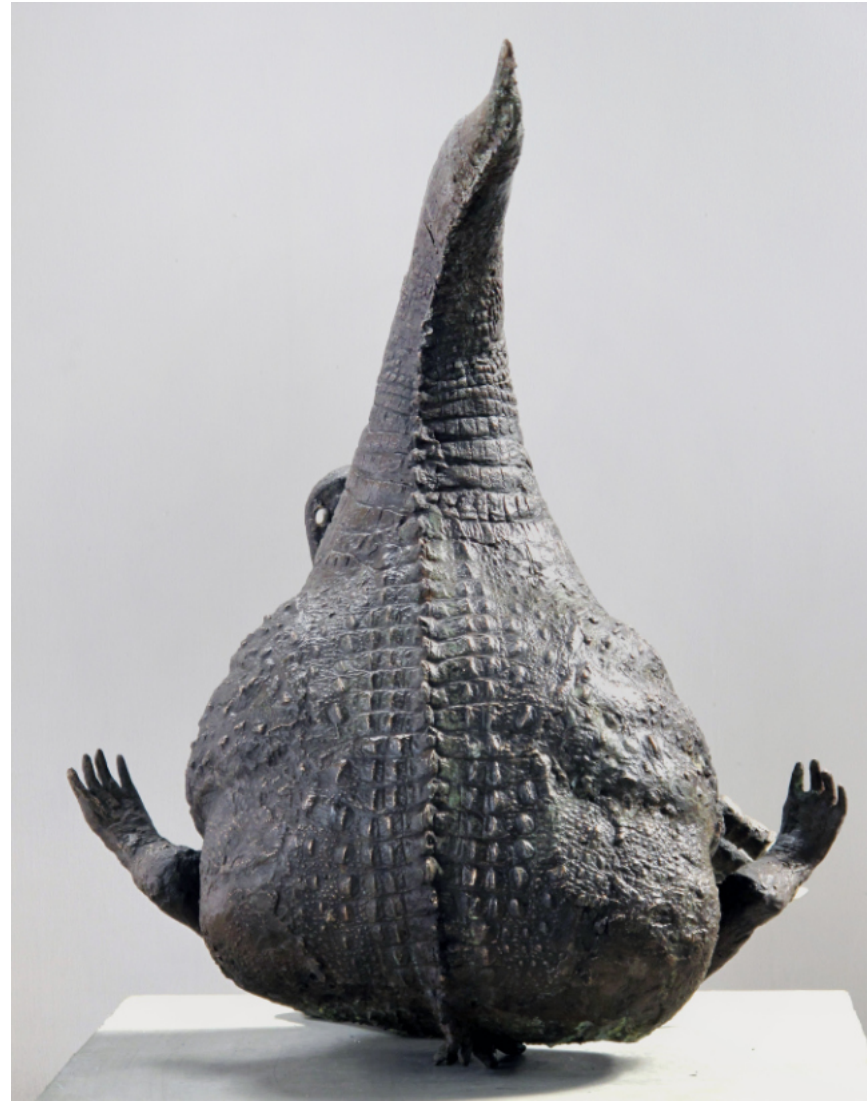
[INQUIRE](#)





Ballon, 2020, elastomer, each approx. 15 x 10 x 12 cm

[INQUIRE](#)



Dinosaurus, 2016, bronze, porcelain, 64 x 52 x 43 cm

[INQUIRE](#)



Nikolaus, 2020, plastic, metal, epoxy, 71.5 x 41.5 cm
[INQUIRE](#)



Krampus, 2020, plastic, metal, epoxy, 71.5 x 41.5 cm
[INQUIRE](#)



Esel, 2013, bronze, 39 x 27 x 28 cm

[INQUIRE](#)





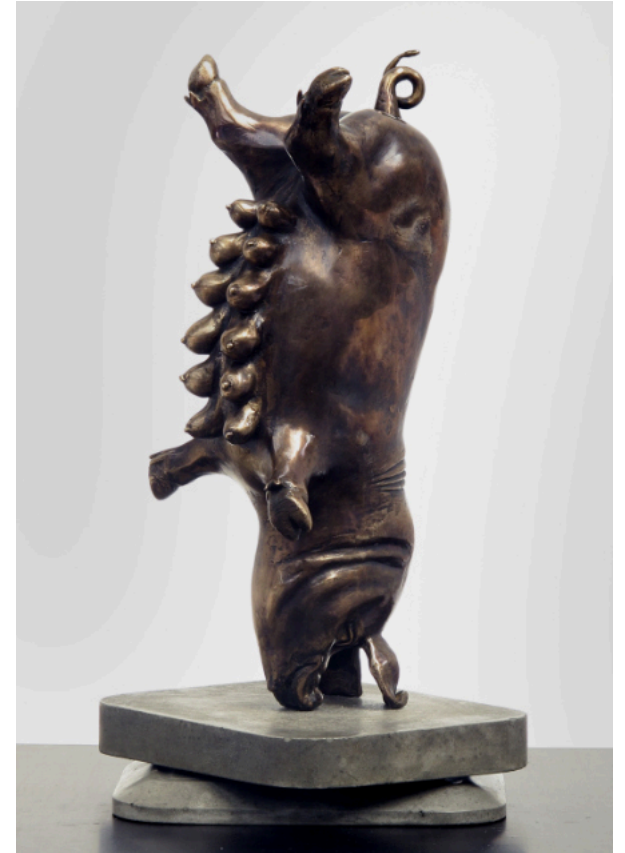
Pferd, 2013, bronze, 35 x 26 x 10 cm

[INQUIRE](#)



Krieger, 2013, bronze, 39 x 27 x 28 cm

[INQUIRE](#)



Glücksschwein, 2017, bronze, base rotatable, 36 x 14 x 15 cm

[INQUIRE](#)



”

For more than a decade, Andreas Grahl has been producing objects, installations and sculptures with a high degree of continuity and precision, which he presents as strange bronze casts oscillating between figuration and abstraction on unconventional pedestals ... strange creatures that one could associate with hunting trophies or relics of Alexander von Humboldt's travels ... In artistic practice, this is again a symptomatic image for a conflict-laden examination of the relationship between content and form. They are relics of fascinating journeys into inner and outer worlds, very sublime and perfectly balanced.

— From: Joachim Blank „Globetrotter“
On the sculptures by Andreas Grahl

Duck, 2016, bronze, 32 x 24 x 26 cm

[INQUIRE](#)





Louise, 2018, bronze, 66 x 24 x 16 cm

[INQUIRE](#)

FOR FURTHER INFORMATION OR INQUIRIES

E-MAIL LEIPZIG@REITERGALLERIES.COM
OR CONTACT US ON WHATSAPP +49 1516 2554119